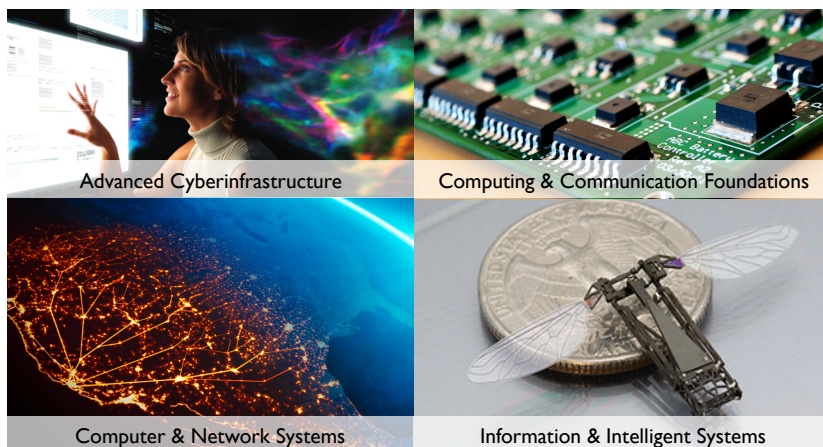


## CISE Research Infrastructure Investments



**Jim Kurose**

Assistant Director, Computer and Information Science and Engineering

National Science Board, May 2016

Innovating CISE Innovating S&E



## CISE investments are transforming science and society



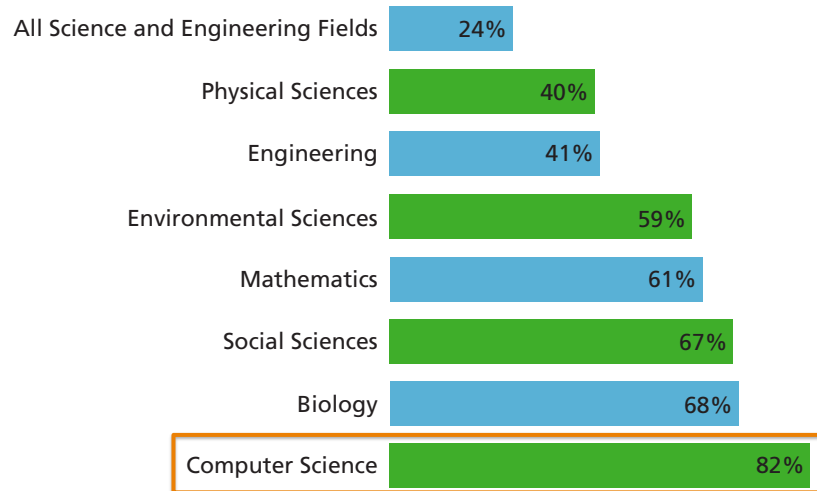
Innovating CISE Innovating S&E

2



## NSF investments are critical to the academic CISE research community

**NSF support of Academic Basic Research (as a percentage of total federal support)**



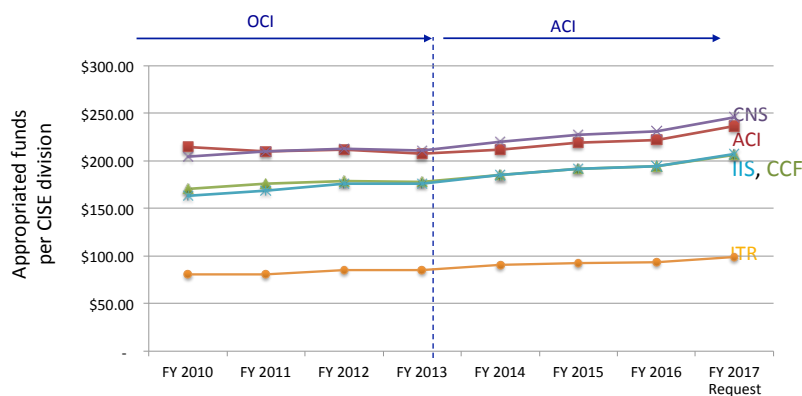
Source: NSF/NCSES, Survey of Federal Funds for Research & Development, FY 2014

Innovating CISE    Innovating S&E



3

## CISE budget supports modest, sustained growth across all divisions

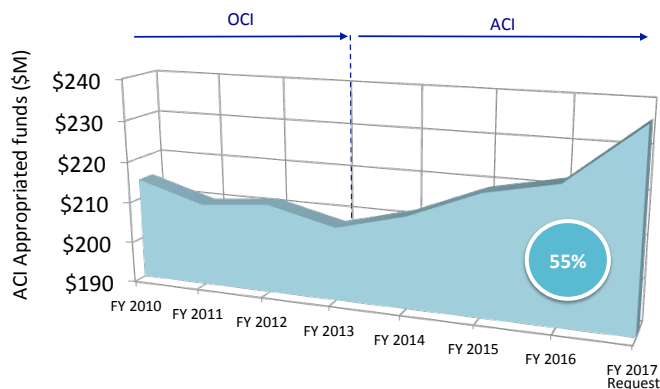


Innovating CISE    Innovating S&E



4

### CISE supports research infrastructure for the CISE and NSF research communities

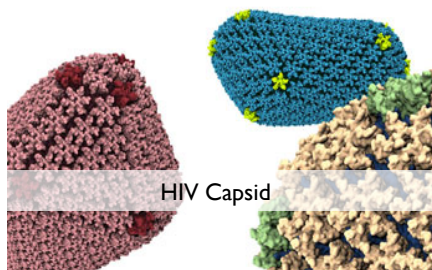


55% of ACI budget supports research infrastructure in FY16

6% of other CISE division's budgets support research infrastructure in FY16




### CISE-led infrastructure enables discoveries



## Testbeds are critical infrastructure for CISE community


**US IGNITE**

- Enabling a new generation of distributed gigabit apps
- \$25M over 5 years
- >35 communities



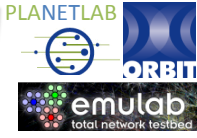
**NSF FUTURECLOUD**

- Cloud software architecture and experimentation
- \$20M over 3 years




**NETWORK RESEARCH TESTBEDS**

- Wide-area wired and wireless networks, network emulation
- \$25M over 13 years
- > 10K users




**GLOBAL ENVIRONMENT FOR NETWORKING INNOVATIONS (GENI)**

- At-scale virtual laboratory enabling experimentation with deeply programmable slices of the network
- \$100M over 10 years
- >6500 users



Innovating CISE


Innovating S&E

7 

## Looking forward


*CISE research testbeds*

**Advanced Wireless**



- Research:** Dynamic spectrum sharing, Millimeter-wave, Massive MIMO, SDN/NFV, Architecture, Service management
- Testbeds:** Campus testbeds, Leveraging GENI, NSFFutureCloud; Smart & Connected Communities


**Cybersecurity**



- Real-world and hypothetical scenarios:** Experimentation in isolation from production systems
- Collaboration:** Data, scenarios, software and tools, experimental procedures, results
- Interagency collaboration in alignment with *2016 Federal Cybersecurity R&D Strategic Plan*

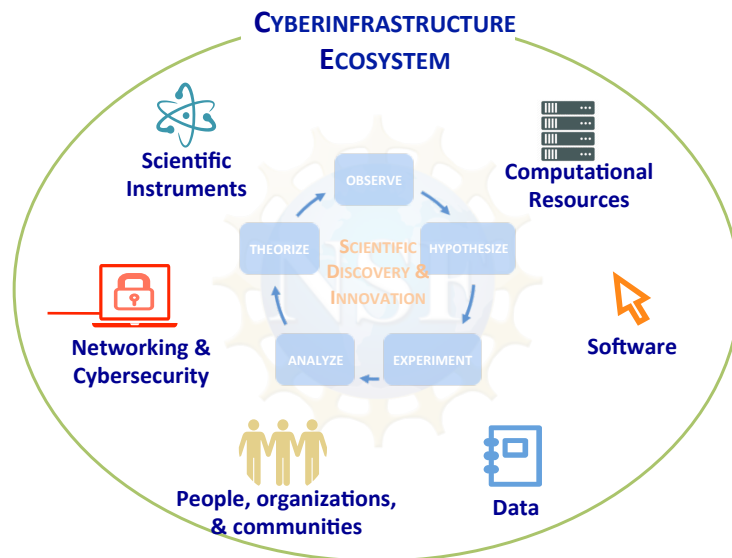
Innovating CISE

Innovating S&E

8 



## CISE leads an expansive view of research infrastructure driven by research priorities and the scientific process

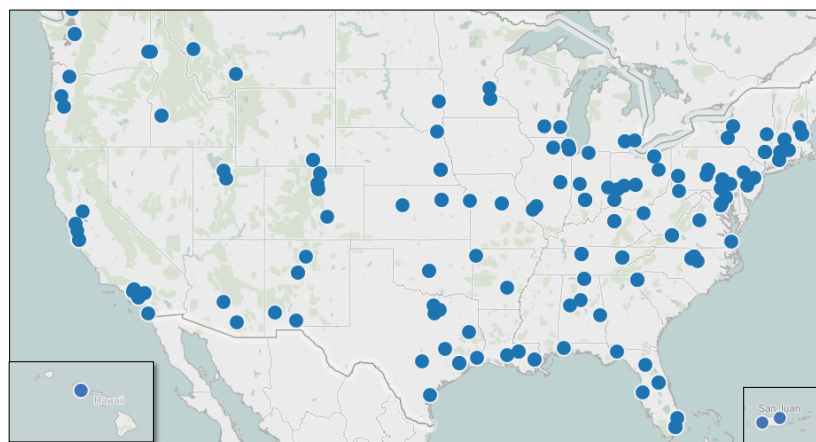


Innovating CISE Innovating S&E



9

## Network connections link U.S. campuses and facilitate international research coordination



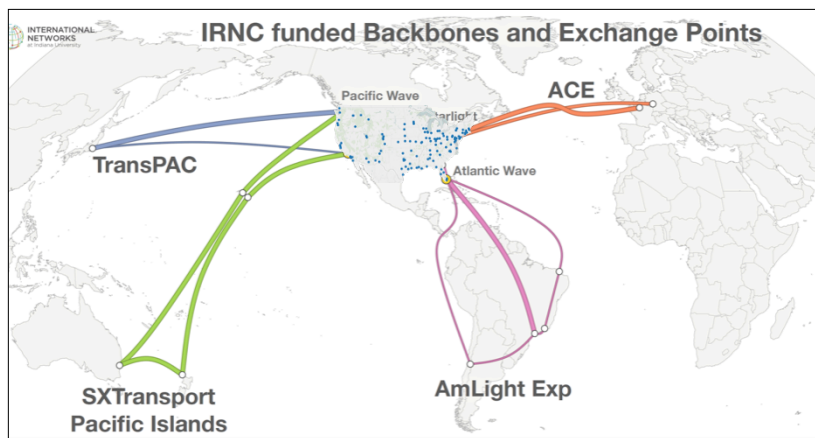
**CAMPUS CYBERINFRASTRUCTURE (CC\*):** Upgrades networking capabilities for >200 campuses across 44 states to support science applications and distributed research projects

Innovating CISE Innovating S&E



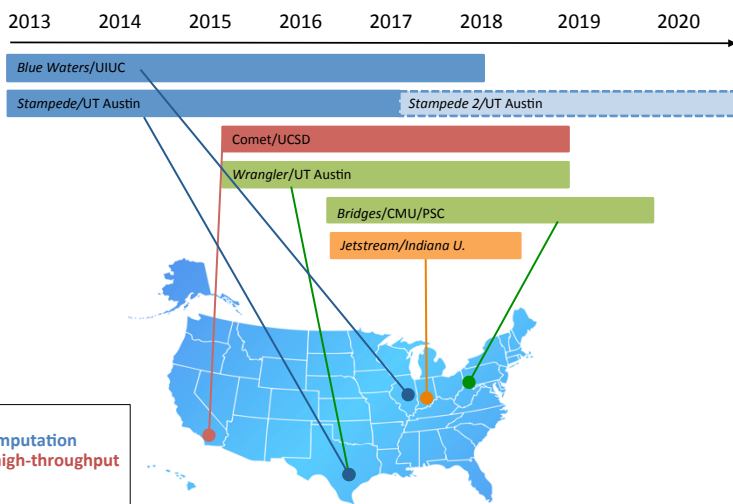
10

## Network connections link U.S. campuses and facilitate international research coordination

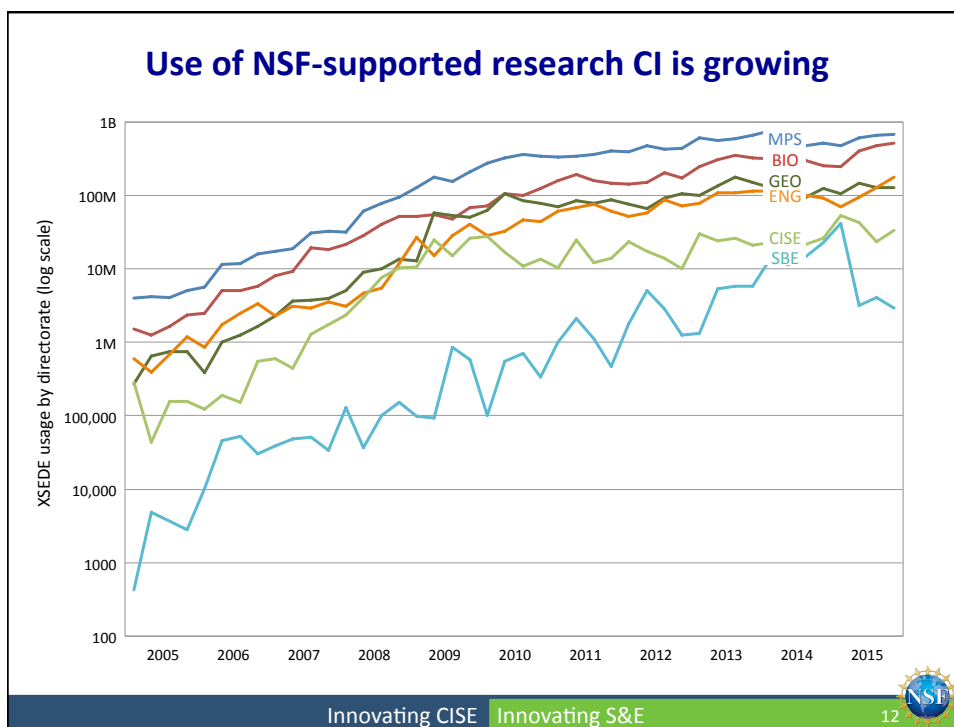
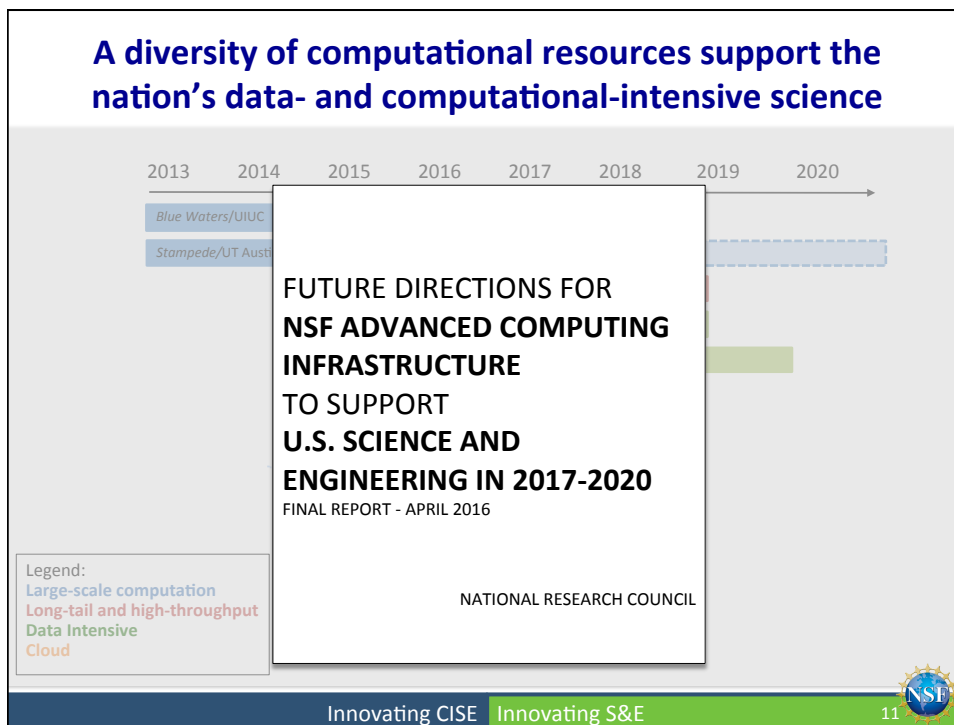


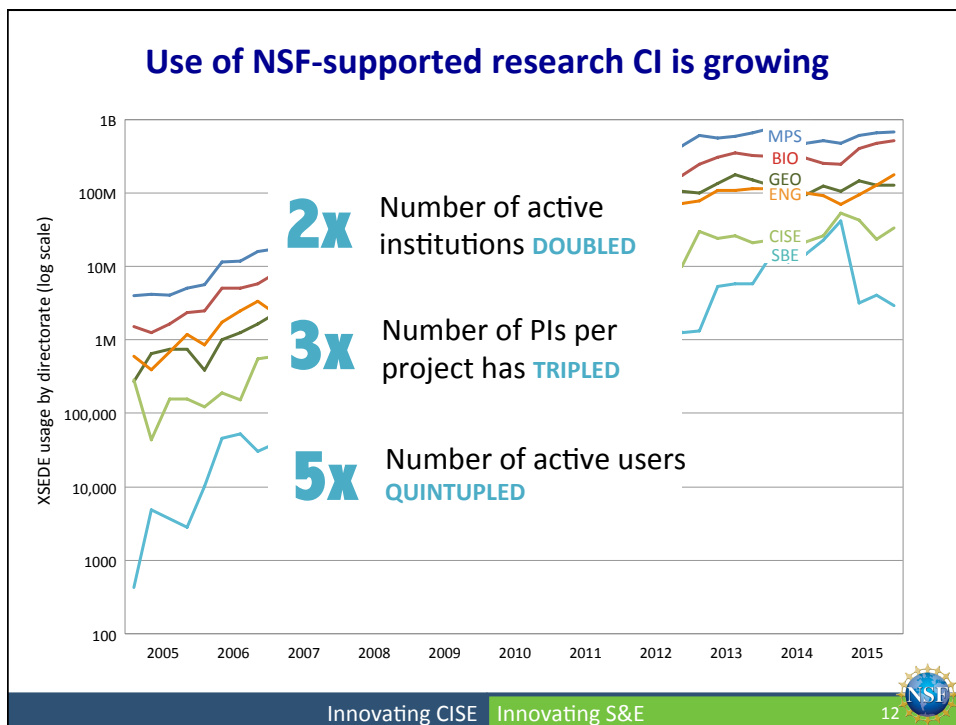
**INTERNATIONAL RESEARCH NETWORK CONNECTIONS (IRNC):** International network services to advance global S&E research and education

## A diversity of computational resources support the nation's data- and computational-intensive science



Legend:  
 Large-scale computation  
 Long-tail and high-throughput  
 Data Intensive  
 Cloud





### XSEDE connects people, services, and resources

**Seamless access to national CI**

**Training and community building**

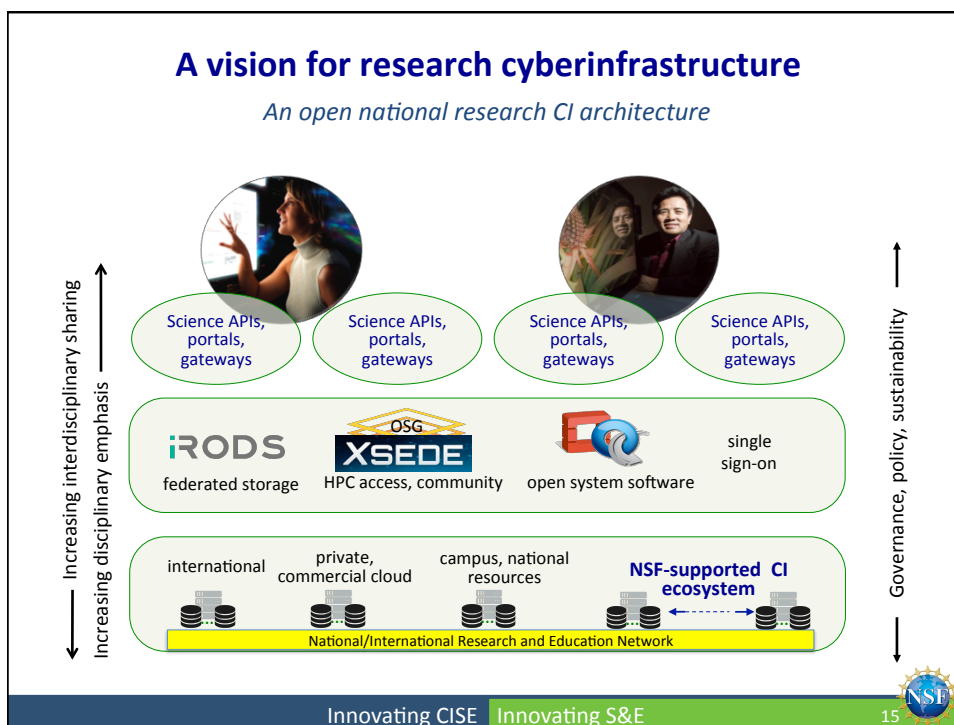
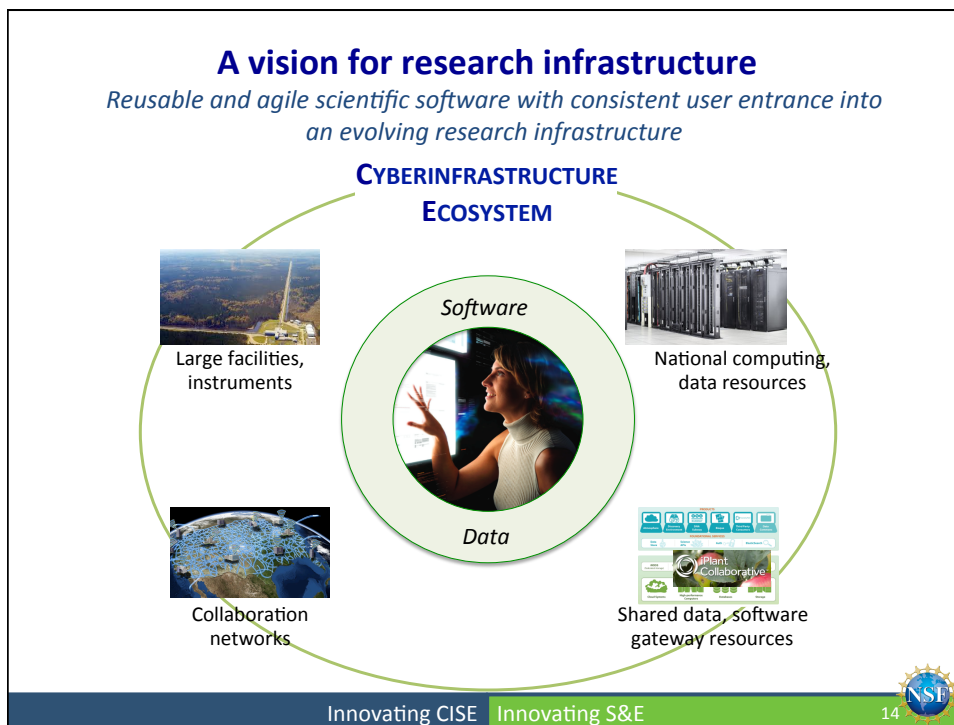
Extreme Science and Engineering Discovery Environment

**Software interface**

|   |   |                                 |
|---|---|---------------------------------|
| Comet                                   |   |                                 |
| amber                                   | apbs                                    | at                              |
| bartools                                | beagle                                  | beast                           |
| beast2                                  | bedtools                                | biozython                       |
| Boost                                   | bowtie                                  | bowtie2                         |
| bx-python                               | CP2K                                    | CPMD                            |
| ctsa-data-movement-clients-registration | ctsa-data-movement-servers-registration | ctsa-local-compute-registration |
| cufflinks                               | DOT                                     | DendroPy                        |
| DPPDiv                                  | edena                                   | fastqc                          |
| FastTree                                | fastx                                   | FSA                             |

**Linking domain and CI experts**

Innovating CISE    Innovating S&E    13





## Looking forward

*Exploring the cutting edge of next-generation research CI*

### Data Infrastructure Building Blocks (DIBBs)

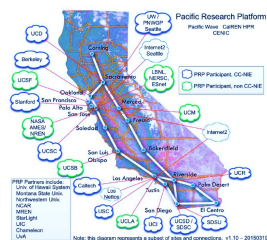
*Data-centric CI capabilities to accelerate interdisciplinary research*

Awards: Early Implementation (\$4M), Pilot Demonstration (\$500K)

### Software Infrastructure for Sustained Innovation (SI<sup>2</sup>)

*Accelerating and sustaining software as CI*

Awards: Scientific Software Elements (SSE, \$5M), Scientific Software Integration (SSI, \$12.5M)



Pacific Research Platform: A West Coast big data freeway system (Smarr et al., UCSD)



CyberGIS: Evolving GIS software for sustained geospatial innovation (Wang et al., UIUC)

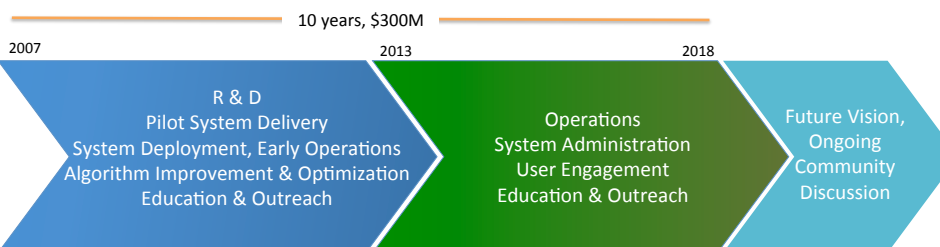
Innovating CISE Innovating S&E

16



## Looking forward

*Critical support for the most demanding science projects*

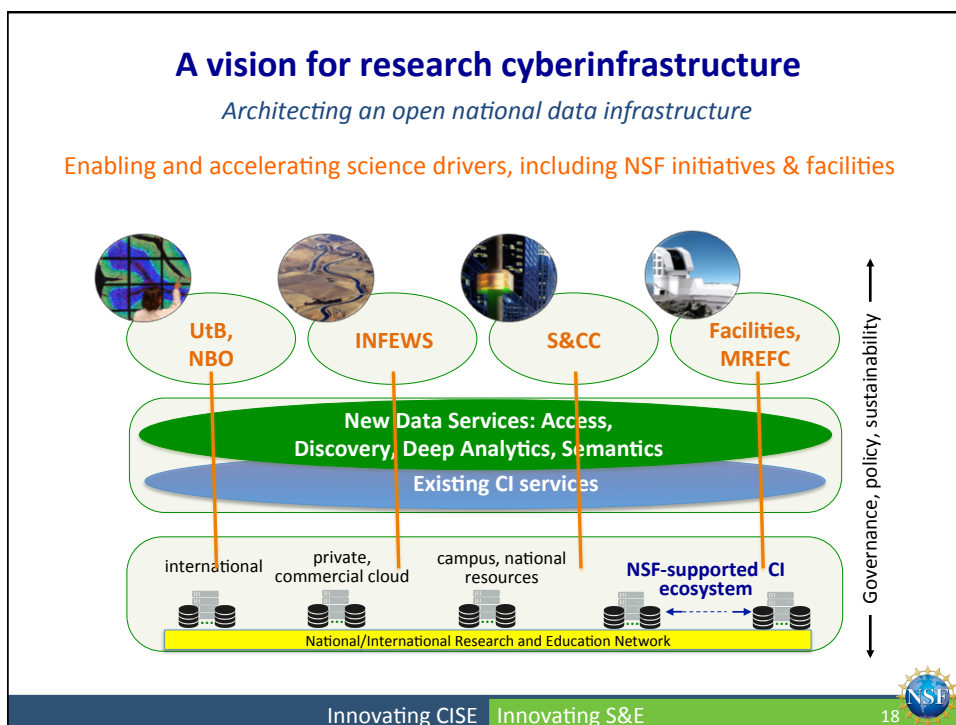
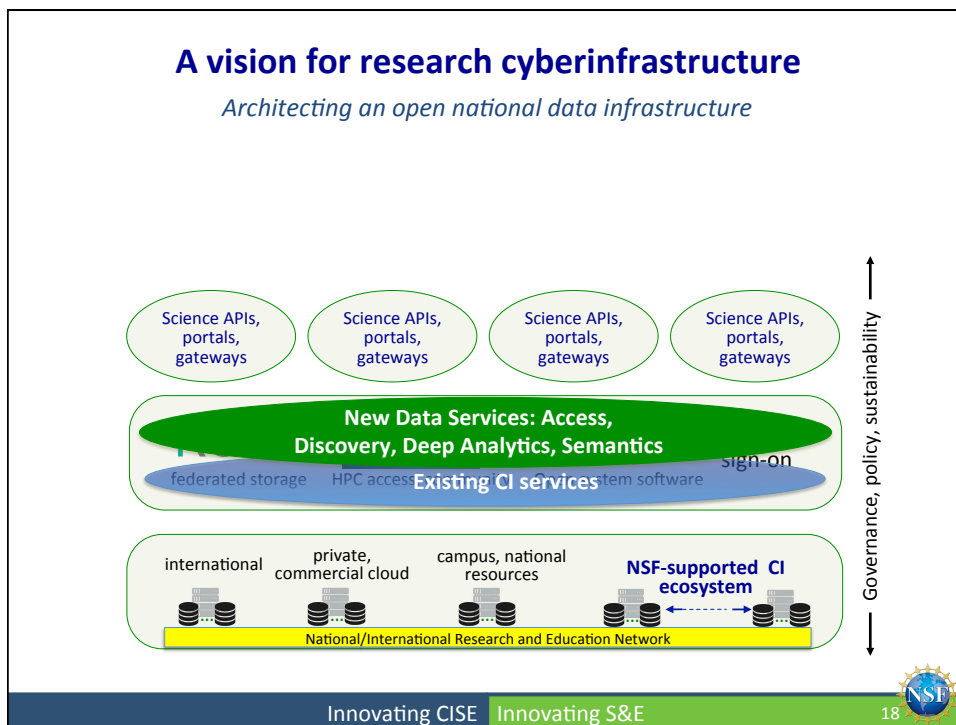


Blue Waters

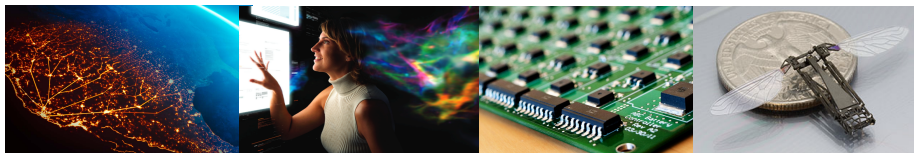
Innovating CISE Innovating S&E

17





## Computer & Information Science & Engineering: Research and infrastructure enhancing our world



- **Ubiquity:** CISE investments are critical to science and society.
- **Engagement:** Research infrastructure enables advances in CISE as well as the broader scientific enterprise.
- **Urgency:** Continued and increasing investment in CISE and CISE-led research infrastructure is a national imperative.